

	PETROL 95 ULP	PETROL 93 ULP & LRP	DIESEL 0.05%	DIESEL 0.005%	ILL. PAR.
GAUTENG PUMP PRICE (SA c/l) AS FROM 06/05/2020	1,222.000	1,202.000	-	-	-
WHOLESALE PRICE (SA c/l) AS FROM 06/05/2020	-	-	1,108.560	1,117.960	449.828
SINGLE NATIONAL MAXIMUM RETAIL PRICE	-	-	-	-	543.000
BASIC FUEL PRICE - 06/05/2020 (SA c/l)	396.248	378.863	365.985	375.658	254.201
PRESS RELEASE CONTRIBUTION TO BFP 06/05/2020 - 06/05/2020 (SA c/l)	274.770	264.770	357.630	367.030	245.128
UNIT OVER/(UNDER) RECOVERY - 06/05/2020 (SA c/l)	(121.478)	(114.093)	(8.355)	(8.628)	(9.073)
AVERAGE BASIC FUEL PRICE 30/04/2020 - 06/05/2020	352.055	338.667	333.136	341.395	204.458
AVERAGE UNIT OVER/(UNDER) RECOVERY 30/04/2020 - 06/05/2020	61.915	65.303	153.294	150.435	219.070

### ANALYSIS MOVEMENT OF AVERAGE OVER/(UNDER) RECOVERY

- MOVEMENT IN INTERNATIONAL PRODUCT PRICES

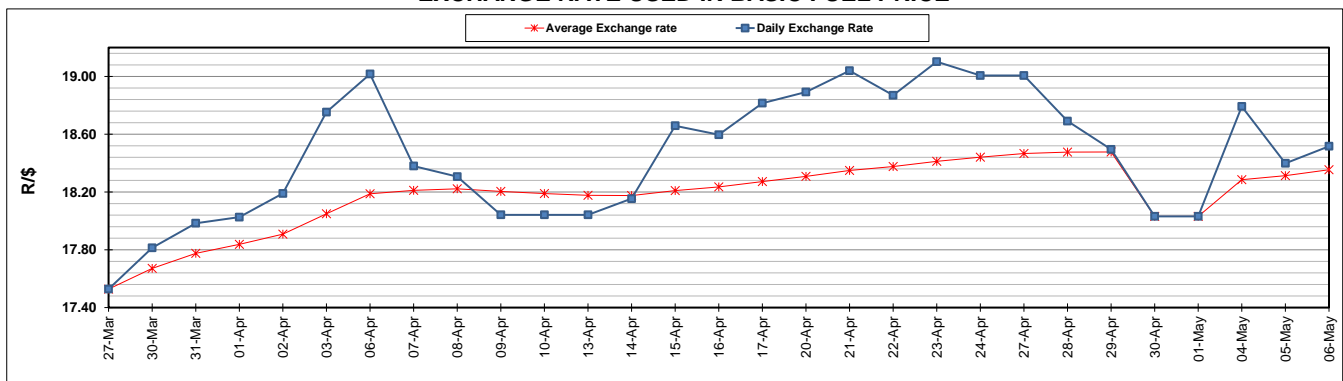
- MOVEMENT IN EXCHANGE RATE

AVERAGE UNIT OVER/(UNDER) RECOVERY 30/04/2020 - 06/05/2020

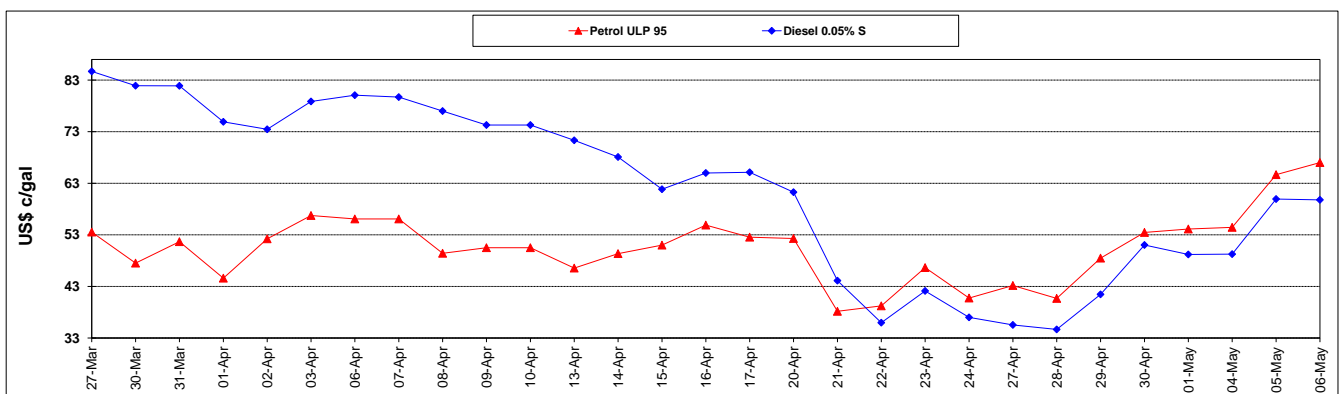
	PETROL 95	PETROL 93	DIESEL 0.05%	DIESEL 0.005%	ILL. PAR.
- MOVEMENT IN INTERNATIONAL PRODUCT PRICES	59.556	63.033	151.061	148.147	217.700
- MOVEMENT IN EXCHANGE RATE	2.359	2.270	2.233	2.288	1.370
AVERAGE UNIT OVER/(UNDER) RECOVERY 30/04/2020 - 06/05/2020	61.915	65.303	153.294	150.435	219.070

### R/\$ EXCHANGE RATE - (R/\$18.5166 - 06/05/2020)

#### EXCHANGE RATE USED IN BASIC FUEL PRICE



#### INTERNATIONAL PRODUCT PRICES OF BASKET USED IN BASIC FUEL PRICE



#### BASIC FUEL PRICE IN SA CENTS PER LITRE

